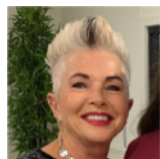


Byron Bay Bridge Club Newsletter

Keeping you up to date with club news



OCTOBER 2023

Greetings members,

Wow October and we are close to saying goodbye to this year. Looks like we are going to be in for a hot and dry summer.

The votes are now tallied for us to stay or leave the Anglican hall and I'm very pleased to announce that 46 votes were lodged and 44 agreed for us to stay. With such strong support to stay we can now start planning for the next few years. The committee will approach the Anglican diocese re installing a reverse cycle air conditioner and some blinds. We will let you know of their decision.

Our club continues to grow which is so exciting after a few lean years. We are starting to see between 8-10 tables each Friday even when regular members are away or travelling. With our move to the Anglican hall, next year looks promising for continued growth and with perfect facilities available the committee may consider other social bridge options for our club. Stay tuned.

You will have noticed that there are now weekly handicap results posted along side the weekly winners. With the growth in members and higher ranked players playing each week your committee is keen to encourage lower ranked players as well. You will see the introduction of a "top of the heap" trophy at the end of the year. Mark Miller, a couple of years back, wrote an article regarding the handicap system and how it works which I have included in the newsletters.

Have a good month and I'll see you around the bridge table but probably not till late October.

Eda

We meet every Friday at the
All Souls' Anglican Church Hall
1 Ashton St Bangalow
We ask that you be seated by 12.15pm
for play to commence promptly at 12.30.

Table Fees

\$6 members/visitors \$10

Join us for a social time afterwards.

BYO drinks and glass

Directory

President Eda Bridgeman 0411 872 423/66930359

Vice President Brian Sundstrom 0429 311 830

Secretary Leo Prendergast 0429 672 262

Treasurer Greg Farrell

Committee Members: Helen Baker, Kay Milne,

OCTOBER REMINDERS

SPRING PAIRS

6TH & 13TH (DRESS UP DAY)

WINE TASTING

FRIDAY 6TH OCTOBER

FRIDAY 6TH NOVEMBER

NOVEMBER

CHARITY & MEMORY DAY 10TH



**HAPPY OCTOBER
BIRTHDAYS**

Judy Baker 12th

Audrey Ryan 16th

Vicki McKain 25th

and to any other
October birthdays



Fine Tuning Stayman

1. Introduction

What version of Stayman works for you? Yes, that's right there are numerous adaptations of the most common convention in bridge.

In a previous article I discussed all the No Trump ranges and my opinion of each. This article discusses the evolution of my Stayman over a strong 15-17 No Trump.

2. The Beginning

This is where we probably all started. Our first convention and it probably sounded like gobbledegook. Bidding 2C over 1NT asking for a four-card major. The responses of: -

- 2D – no 4-card major
- 2H – 4 hearts, possible 4 spades
- 2S – 4 Spades, not 4 Hearts

This soon became easy, and we were bidding 2C and answering by rote.

The problem arises when you have 15-17 points and a 5-card major. What do you rebid? 1NT is not enough and 2NT is too much. The search for an answer begins.

3. Extended Stayman

A brief read of extended stayman was rapidly discarded. If anyone knows my distaste for a 15-18 point No Trump range, you will know that this convention has no mileage.

The No Trump bids are so well defined and grouped in manageable 2- or 3-point ranges. A range covering 4 points does not fit my lexicon.

4. 5 Card Puppet Stayman

5 Card Puppet Stayman is used over 2 No Trump in order to compress 4- and 5- card major responses in limited bidding space. This can be applied to

Stayman over 1NT. The responses to 2C can now show both a 4 or 5 card major. Thus, in response to 2C opener can show.

- 2D – at least one 4 card Major
- 2H – 5 hearts
- 2S – 5 Spades
- 2NT – no 4 or 5, minimum
- 3NT – no 4 or 5, maximum

Note responder only needs one 3 card Major to bid 2C

Over 2D, responder bids

- 2H – 4 spades and not 4 hearts
- 2S – 4 hearts and not 4 spades
- 2NT – no 4-card major, minimum
- 3D – both 4 card majors

This is great, we can now show our point range, but we have lost Garbage Stayman.

5. 5/4 Card Puppet Stayman

In order to recover garbage stayman, 2C needs to change to ask about a 5-card major only. The responses to 2C become.

- 2D – no 5-card major
- 2H – 5 hearts
- 2S – 5 spades
- No other responses permitted.

Responder only needs 3 of one major to bid 2C. If opener denies a 5-card major, responder bids 2NT with 8/9. There is a possibility to lose a 4-4 Major fit if opener is 15/16.

The loss of the 4-4 card major fit is not a huge disaster because having 8 cards in the suit may provide a source of tricks in 2NT.

Additionally, if opener is 16/17, the following responses are available.

- 3C – I have both 4 card Majors
 - 3D - I also have both 4 card majors
 - 3H - 4 spades and not 4 hearts
 - 3S – 4 Hearts and not 4 Spades
 - 3NT – no 4 card
- 3H – 4 hearts

- 3S – 4 spades

The loss of the 4-4 majors fit is replaced with the ability to pass opener's bid. Holding a hand like this

Xxx
 Xxx
 Xxxxxx
 X

With zero points, it's worth bidding 2C and passing opener's response – hopefully it's 2D, but if not at least we are in a 5-3 Major suit fit.

Additionally, with a hand like this

Xxxx
 Xxxxx
 Xxx
 X

After 1NT, 2C, 2D (no 5 card), a bid of 2H tells partner to pass. There is no 5-4 spade fit and we must play in a 5-2 or 5-3 heart fit – this is a similar result as a transfer originally but without the chance of a 5-4 spade fit.

After 2D by opener, 2H by responder shows 5H and 4S, 2S shows 5S and 4H – opener should pass these bids or correct 2S to 3H to play in a 4-4 heart as opposed to a 5-2 spade fit.

6. Conclusion

Bidding a No Trump as often as possible has the attraction of

- Showing your point range immediately
- Provides partner with tools to bid with zero points upwards!

Be bold, try different variations and see how they work for you.

MEET CLAUDIA KIERNAN



My happy long life.

I was Born in Casino. Claudia Mary Bracks 10th April,1938.I did say long. I was educated at St.Mary's School Casino . Left school after completing a business course.

My first employment was as a Chemist Assistant for 5years, from there many interesting jobs followed; 2 years in Brisbane as an accounts and events assistant at a large historic hotel; Lismore as a chemist assistant; Casino as a Rates clerk with the Casino municipal Council. All very interesting positions for a young girl.

Casino was a great town in the 50s and 60s. We went to very beautiful balls , dinners and dances dressed to the nines every week in winter and the beach at Ballina or Byron in the summer.

My love was musical theatre. Many roles in Gilbert and Sullivan operettas, Desert Song,White Horse Inn all in Casino with some Drama with the Casino Dramatic society and My Fair Lady in Mosman Sydney after we married. I met Peter in 1963 actually our first date was after White Horse Inn. Some would say a " Stage door johnny"

Married life was 6 years in Sydney followed by 22 years in Armidale. My love of business and fashion led me to retail in fabrics and with a friend opened Fabric Fair in the 82 recession and it was a winner. We were so busy helping customers with their money saving sewing. They loved us. Making beautiful clothes for Charity fashion parades and dinners of 500 people kept us very busy.The Managing director of vogue patterns called us " big frogs in a little puddle".

I was sorry I had to discontinue because of serious feet problems and surgery.

Our home in Armidale, which we relocated to acres and renovated in the 70s, was an historic home which we loved. Three children, horses, dog ,chooks and calves gave our children a love of the country as they were born in Sydney although we were country folk.

Moved to Byron Bay in 1994, all children off on their own adventures, where we bought a beautiful historic home again and it was operationg as a B&B. Six years of interesting people and hard yakka. We retired ,sort of , looking after beautiful grandchildren and locum for tired hospitality owners.

Conference volunteers for St.Vincent de Paul for over 10years,where I also became a Regional President.

Peter played golf. After reading that Marj Buckley took up Bridge at a late age we joined a group learning bridge basics from Gary Lynn.

I have enjoyed Byron Bay Bridge club for years, spent a year as President and have always enjoyed the friendly hospitality which we really encourage. Easier for me than Bridge 😊😊. Through bridge I have made so many lovely friendships.

Now President of the Brunswick Valley Bridge Club.

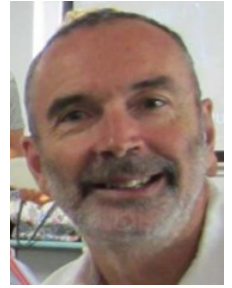


These days you can find anything online

But wait...there's MORE

A bumbling bridge player explained to his friend how he planned to improve his game. "Every night when I go to bed I will think about the mistakes I made that day at the bridge table." "Gee" his friend said, "how will you get any sleep?"

Dummy apologising for getting the partnership too high says: "I was hoping you had a second suit." Declarer says: "I didn't even have a first."



The Handicap System

Mark Miller

This applies to any pairs session that has been scored using the normal Matchpoint Scoring. Our software, Compscore 3, has a system that calculates a handicap result for each pair based on the percentage they achieved in a session and previous performance data for the players in that pair.

EAST		WEST			
1	4	(2.40%)	(-5.72%)	57.41	55.75
2	6	(-0.06%)	(-0.06%)	54.90	54.84
3	9	(9.81%)	(9.81%)	44.15	53.96

An example from a recent session (names redacted) shows Pair 4 to be the handicap winners. Their session percentage of 57.41 was handicapped down to a result of 55.75. You can see that the inexperienced third place pair for EW had their session score of 44.15 boosted to 53.96.

Understanding these top level calculations is easy enough. Next to each player's name is a percentage figure that could be positive or negative. This is Compscore's handicap for the player. A positive figure is for a player whose average of recent result is under 50%. So a negative figure denotes a player who has been doing well lately. For any pair, it is the average of these two figures that is added to the session percentage to determine the handicap result. The calculation for Pair 4 is $57.41 + (2.40 + -5.72)/2 = 55.75$

The Compscore handicap figures are regularly changing to take into account newer results and to eventually ignore older results. The system allows for players having different partners on different days and for the sessions to have different standards by having a player handicap per day. It is assumed that both players in a pair have contributed equally to any particular session result.

So for every member and any day of the week, Compscore will look at the last 8 pairs results which include that player on that day. If there are 8 results then the highest and lowest results are ignored and the remaining 6 are averaged to determine Player Performance Data for that player on that day of the week. If there are less than 8 results than all available results for that day are averaged.

The lower level calculations are a bit harder but an example from the West player of Pair 4 should help. This is from a Monday session and the player had a handicap of -5.72 so must have some good recent results. Compscore can be used to look at this recent Monday history.

Enter the player's expected percentage for each day.				Source Data
Sunday	<input type="text" value="90.00"/>	Thursday	<input type="text" value="51.85"/>	Monday
Monday	<input type="text" value="54.76"/>	Friday	<input type="text" value="90.00"/>	61.16*
Tuesday	<input type="text" value="45.79"/>	Saturday	<input type="text" value="47.05"/>	57.41
Wednesday	<input type="text" value="45.79"/>			56.36
				56.21
				55.76
				52.62
				50.22
				42.78*

The data on the right has the most recent results sorted numerically and the highest and lowest results denoted with an asterisk. The average of the middle 6 results is 54.76 and this shows against Monday on the left.

I supplement what Compscore is doing here in a few ways. If a player does not have at least 4 results in the last two years for a given day then I assign a figure of 90%. Players must have some recent performance data to be eligible for a handicap voucher. The artificial value of 90% pushes that player down in the list of handicap results. If a player does not have 4 recent results for a particular day but does have recent results for another day then I assign a value. For example a Saturday figure is 95% of the Monday figure for a player without recent Saturday data but with recent Monday data. This is aimed at allowing a player to start playing on a different day and be fairly eligible for a handicap voucher.

The final step in the handicap process is to calculate those figures you see against the player names on the handicap printout. The system assumes that 50% is a standard result and for each player determines how much their recent Player Performance Data is above or below 50%. This difference is scaled by a factor of 1.2. Continuing with the example above we can see that the West player of Pair 4 has a Monday average of 54.76 this determines a handicap of -5.72 using the calculation $(50 - 54.76) * 1.2$ (sometimes there is some roundoff error).

Having the Multiplier set to 1.2 rather than 1.0 slightly favours players with a positive handicap and correspondingly disadvantages the players who have been doing well recently. The intention here is to encourage the less experienced players with an occasional award when they have done well. Compscore does not have a process to handicap a Teams Event but I have created one that uses Compscore's Player Performance Data as a starting point.

SEPTEMBER WEEKLY BRIDGE WINNERS

1st September

**N/S Greg Farrell & Helen Baker
E/W Brad Hurst & Michele Clark**

8th September

**N/S Howard Jeffrey & Jenny Bush
E/W Liz Jeffrey & Carol Hocking**

15th September

**N/S Leo Prendergast & Jan Gasteen
E/W Brad Hurst & Michele Clark**

22nd September

**N/S Helen Baker & Greg Farrell
E/W Brad Hurst & Michele Clark**

CONGRATULATIONS TO

Starlette Isaacs

NEW

Club Master

&

Graduate Master

